

◆ **Function setting / 功能設定**

| Status / 狀態 | Symb./顯示符號 | Description / 說明 | | | | | | | | | | | | |
|--|---|------------------|---|-----|---|-----|---|-----|------|-----|------|-----|------|---|
| <pre> graph TD A[Running status 運轉狀態] -- "Press [SET] & [▽] key 3 sec" --> B[Setting of lock 鎖住設定] B -- "Press [SET] key" --> C[Selection of display 顯示選擇] C -- "Press [SET] key" --> D[Selection of input 輸入選擇] D -- "Press [SET] key" --> E[Selection of control method 控制方式選擇] E -- "Press [SET] key 3 sec" --> F[Selection of start method 起動方式選擇] F -- "Press [SET] key" --> A </pre> | <table border="1" style="width:100%; border-collapse: collapse;"> <tr><td style="text-align: center;">A</td></tr> <tr><td style="text-align: center;">0</td></tr> <tr><td style="text-align: center;">Lck</td></tr> <tr><td style="text-align: center;">2</td></tr> <tr><td style="text-align: center;">dSP</td></tr> <tr><td style="text-align: center;">A</td></tr> <tr><td style="text-align: center;">Int</td></tr> <tr><td style="text-align: center;">4-20</td></tr> <tr><td style="text-align: center;">Con</td></tr> <tr><td style="text-align: center;">PhAS</td></tr> <tr><td style="text-align: center;">Str</td></tr> <tr><td style="text-align: center;">Soft</td></tr> </table> | A | 0 | Lck | 2 | dSP | A | Int | 4-20 | Con | PhAS | Str | Soft | <p>1> Running status / 運轉狀態 2> 「A」: Output volume / 輸出量; 「I」: Input volume / 輸入量 「n」: Manual output volume / 手動輸出量</p> <p>1> 「Lck = 0」: All lock / 全鎖定 2> 「Lck = 1」: Data settable / 參數可設定 3> 「Lck = 2」: Unlock / 可設定</p> <p>1> 「dSP = A」: Output volume / 輸出量 2> 「dSP = I」: Input volume / 輸入量 3> 「dSP = n」: Manual output volume / 手動輸出量</p> <p>「4-20」 = 【4 ~ 20mA】; 「0-20」 = 【0 ~ 20 mA】; 「1-05」 = 【1 ~ 5V】; 「2-10」 = 【2 ~ 10V】; 「0-5」 = 【0 ~ 5V】; 「0-10」 = 【0 ~ 10V】; 「ur」 = VR (10kΩ) / 可變電阻</p> <p>1> 「Con = PhAS」: Phase control / 相位控制 2> 「Con = Ero」: Zero cross control / 零點控制</p> <p>1> 「Str = Soft」 = Soft start / 緩衝起動 2> 「Str = kick」 = Kick start / 脈衝起動</p> |
| A | | | | | | | | | | | | | | |
| 0 | | | | | | | | | | | | | | |
| Lck | | | | | | | | | | | | | | |
| 2 | | | | | | | | | | | | | | |
| dSP | | | | | | | | | | | | | | |
| A | | | | | | | | | | | | | | |
| Int | | | | | | | | | | | | | | |
| 4-20 | | | | | | | | | | | | | | |
| Con | | | | | | | | | | | | | | |
| PhAS | | | | | | | | | | | | | | |
| Str | | | | | | | | | | | | | | |
| Soft | | | | | | | | | | | | | | |

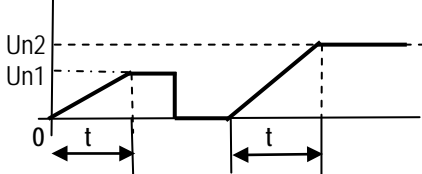
◆ **Data setting / 參數設定**

| Status / 狀態 | Symb / 顯示符號 | Description / 說明 | | | | | | | | | | | | |
|---|---|------------------|---|-------|---|-------|-----|-----|----|-----|----|------|---|---|
| <pre> graph TD A[Volume of Output or input 輸出或輸入量顯示] -- "Press [SET] key 3 sec" --> B[Setting of min output 最小輸出量設定] B -- "Press [SET] key" --> C[Setting of max. output 最大輸出量設定] C -- "Press [SET] key" --> D[Setting of soft start time 緩衝起動時間設定] D -- "Press [SET] key" --> E[Setting of alarm status 警報輸出狀態選擇] E -- "Press [SET] key 3 sec" --> F[Setting of Input offset 輸入偏差修正] F -- "Press [SET] key" --> A </pre> | <table border="1" style="width:100%; border-collapse: collapse;"> <tr><td style="text-align: center;">A</td></tr> <tr><td style="text-align: center;">0</td></tr> <tr><td style="text-align: center;">Out.L</td></tr> <tr><td style="text-align: center;">0</td></tr> <tr><td style="text-align: center;">Out.H</td></tr> <tr><td style="text-align: center;">100</td></tr> <tr><td style="text-align: center;">tnr</td></tr> <tr><td style="text-align: center;">10</td></tr> <tr><td style="text-align: center;">ALn</td></tr> <tr><td style="text-align: center;">no</td></tr> <tr><td style="text-align: center;">OFSt</td></tr> <tr><td style="text-align: center;">0</td></tr> </table> | A | 0 | Out.L | 0 | Out.H | 100 | tnr | 10 | ALn | no | OFSt | 0 | <p>1> Range : 0 ~ 100.0% 2> 「A」: Output volume / 輸出量 「E」: Input volume / 輸入量 「n」: Manual output volume / 手動輸出量</p> <p>1> Range : 0 ~ 100 2> Min. output volume setting / 最小輸出量設定</p> <p>1> Range : 0 ~ 199 2> Max. output volume setting / 最大輸出量設定</p> <p>1> Range : 0 ~ 199 sec 2> Time of soft start / 緩衝起動時間</p> <p>1> 「ALn = no」: Alarm output normal open (NO) / 警報輸出常開 2> 「ALn = nc」: Alarm output normal close (NC) / 警報輸出常閉</p> <p>1> Range : - 99 ~ 99 2> Setting of Input offset / 輸入偏差修正</p> |
| A | | | | | | | | | | | | | | |
| 0 | | | | | | | | | | | | | | |
| Out.L | | | | | | | | | | | | | | |
| 0 | | | | | | | | | | | | | | |
| Out.H | | | | | | | | | | | | | | |
| 100 | | | | | | | | | | | | | | |
| tnr | | | | | | | | | | | | | | |
| 10 | | | | | | | | | | | | | | |
| ALn | | | | | | | | | | | | | | |
| no | | | | | | | | | | | | | | |
| OFSt | | | | | | | | | | | | | | |
| 0 | | | | | | | | | | | | | | |

◆ Illumination of control method / 控制方式說明

| Control method 控制方式 | Phase angle control 相位控制 | Zero cross control 零點控制 | |
|------------------------|---|--|--|
| Output volume 輸出量 | 10% | | |
| | 25% | | |
| | 50% | | |
| | 75% | | |
| Feature 特性 | 1. Suited to control the inductive load or The variable resistance load (IR, Pure metal heater, Silicone carbonate heater or Transformer) 2. The power factor $\cos \theta < 1$ 3. Higher harmonic noise 1. 適於控制電感性或變阻性負載 (紅外線加熱器, 變壓器負載, 純金屬或碳矽發熱體) 2. 功率因數小於 1 3. 較高諧波干擾 | 1. Suited to control the constant resistance load or The capacity load. (Alloy heater or Capacitor) 2. The power factor $\cos \theta = 1$ 3. Lower harmonic noise 1. 適於控制定阻性負載或電容性負載 (合金類發熱體或電容器負載) 2. 功率因數等於 1 3. 較低諧波干擾 | |

◆ Soft start / 緩衝起動

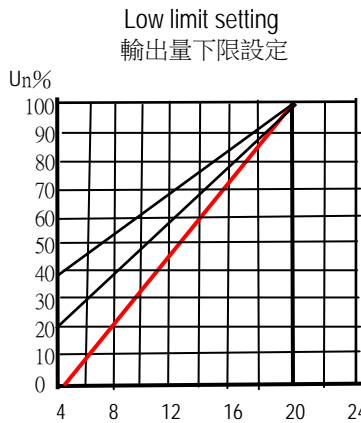


- 1 > Un or $Un2$: Output volume
 2 > t : Soft start time (0 ~ 199 sec)

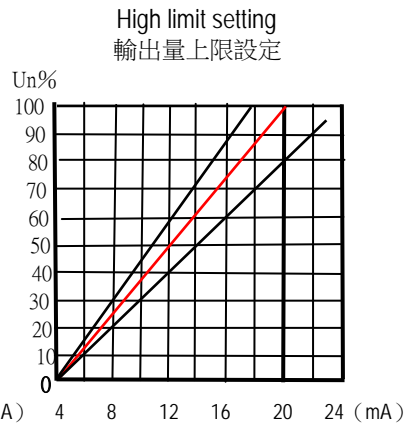
◆ Setting of manual output / 手動輸出設定

| Manual output status 手動輸出狀態 | Description 說明 |
|--------------------------------|--|
| n.000 | 1. On the manual output status, Press Δ or ∇ key to change the manual output volume 2. Press SET to finish setting 1. 在手動輸出狀態中, 按 Δ 或 ∇ 鍵可改變手動輸出量。 2. 按 SET 鍵完成手動輸出量設定。 |

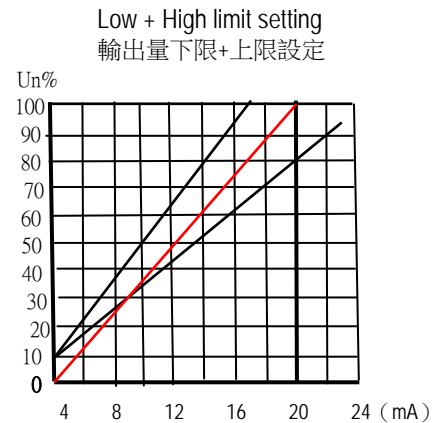
◆ Setting of output limit / 輸出量限制設定



- 1 > A : Low limit = 0 ; High limit = 100
 2 > B : Low limit = 20 ; High limit = 100
 3 > C : Low limit = 40 ; High limit = 100



- 1 > A : Low limit = 0 ; High limit = 100
 2 > B : Low limit = 0 ; High limit = 80
 3 > C : Low limit = 40 ; High limit = 120



- 1 > A : Low limit = 0 ; High limit = 100
 2 > B : Low limit = 10 ; High limit = 80
 3 > C : Low limit = 10 ; High limit = 120

Note :

- 1 > 「 Un 」 : Output volume / 輸出量
 2 > Setting range : Low limit = 0 ~ 100% , High limit = 0 ~ 199% / 設定範圍 : 下限設定 = 0 ~ 100% , 上限設定 = 0 ~ 199%
 3 > Low + high limit setting is suited to control the radial heating heater such as IR lamp.
 輸出量下限+上限設定適用於高輻射熱加熱器如紅外線加熱器。